

Wallbeds
"n" More

A comfortable extra
bed for any room!

VALENCIA



Valencia with 2 drawers and tray cabinet in Sunset finish VV50, VNFS



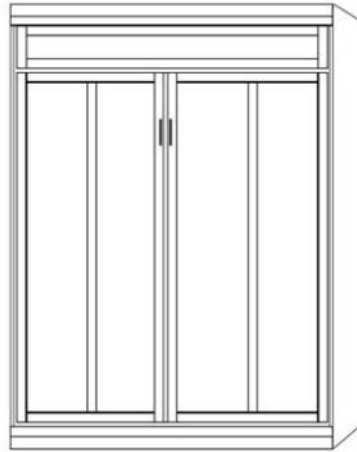
A comfortable extra bed for any room!

FINISH OPTIONS

- Cognac-R
- Caramel-B
- Bark Gray-BG
- Sunset-S
- Natural -N
- Maple-M
- Gray-G
- Cinnamon-E
- Espresso-D
- White-WH
- (WH —10% UP-Charge)

HARDWARE

- #3 Nickel Bar
- #13 Bronze Bar
- #10 Cody Black
- #11 Cody Nickel
- #12 Cody Bronze
- #14 Cody Gold
- #15 Bridge Black
- #16 Bridge Bronze
- #17 Bridge Nickel
- #18 Bridge Gold



VV50 QUEEN

CLOSED— 65 x 17 x 90 OPEN —65 x 86 x 90

VV46 FULL

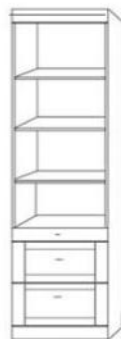
CLOSED— 59 x 17 x 85 OPEN —59 x 81 x 85

Can accommodate up to a 12" thick mattress



3 DRAWER

- VTFS 16 X 85 _____
- VTQS 16 X 90 _____
- VPTF 24 X 85 _____
- VPTQ 24 X 90 _____
- VPGF 32 X 85 _____
- VPGQ 32 X 90 _____



2 DRAWER TRAY

- VNFS 16 X 85 _____
- VNQS 16 X 90 _____
- VPNF 24 X 85 _____
- VPNQ 24 X 90 _____



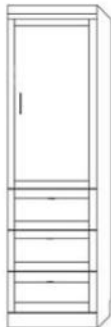
FILE PENCIL DRAWER

- VLFS 16 X 85 _____
- VLQS 16 X 90 _____
- VPLF 24 X 85 _____
- VPLQ 24 X 90 _____



DOOR -TRAY- 2 DRAWERS

- VPUF 24 X 85 _____
- VPUQ 24 X 90 _____



3 DRAWER-DOOR

- WWFS 16 X 85 _____
- WWQS 16 X 90 _____
- VPWF 24 X 85 _____
- VPWQ 24 X 90 _____



2 DRAWER-PENCIL-DOOR

- VXFS 16 X 85 _____
- VXQS 16 X 90 _____
- VPXF 24 X 85 _____
- VPXQ 24 X 90 _____



OPEN DOOR

- VDFS 16 X 85 _____
- VDQS 16 X 90 _____
- VPCF 24 X 85 _____
- VPCQ 24 X 90 _____



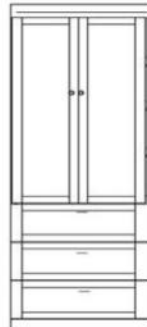
BOOKCASE

- VBFS 16 X 85 _____
- VBQS 16 X 90 _____
- VPBF 24 X 85 _____
- VPBQ 24 X 90 _____



2-DOOR

- VDFL 32 X 85 _____
- VDQL 32 X 90 _____



GUEST CHEST

- VPWU 32 X 85 _____

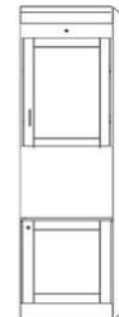
NIGHTSTAND

24 x 16 x 29

- VNS _____
- 2 DRAWERS/PENCIL
- VNST _____
- 2 DRAWERS/TRAY

FILE CART

- VFC \$ _____
- 16.5 x 21.5 x 28



FOLDING DESK

- VPAF 24 X 85 _____
- Desk is 48" Long
- Extends to 59"

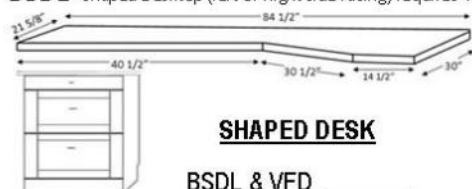


DESK CART

- DC _____

63 x 21 7/8 x 31 1/2"

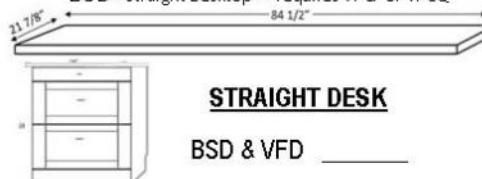
BSDL— Shaped Desktop (left or Right side facing) requires VDFL or



SHAPED DESK

- BSDL & VFD _____

BSD— Straight Desktop — requires VPCF or VPCQ



STRAIGHT DESK

- BSD & VFD _____